



# ARCHDEACON JOHN LEWIS NEWSLETTER

'Strength through knowledge and faith.'

**Friday 17th October 2025**

**Attendance: 92%**

## **Fabulous Friday Round-Up!**

This week has been jam-packed with learning, fun, and community spirit! Here's a look at everything that made the week so special:

### **Show Racism the Red Card**

Today our school proudly stood together in support of Show Racism the Red Card. We all wore red to raise awareness and promote equality and respect for all. Through worship and classroom discussions, we explored the importance of inclusion and standing up against discrimination.

### **Netball Tournament Triumph**

Our netball team showed fantastic teamwork and determination at the inter-school netball tournament. With strong passes, great defence, and lots of encouragement on and off the court, they made us so proud. Well done to all the players and Mrs Hodges – you were amazing ambassadors for our school.

### **Messy Church Coffee Morning**

Parents, carers, and pupils enjoyed a warm welcome at our Messy Church Coffee morning. From crafts and activities about Abraham, to delicious refreshments, it was a wonderful way to connect. A heartfelt thank you to all the church volunteers who made it happen.

Please scroll down for more photos of the fantastic work happening in classrooms across the school.

Have a lovely weekend,

**Mrs L Forster**

Acting Headteacher



**Diwrnod Shwmae!**

**Keep in Touch:**

[www.ajlprimary.co.uk](http://www.ajlprimary.co.uk) | 01656 815520 | [admin@archdeaconjohnlewisps.bridgend.cymru](mailto:admin@archdeaconjohnlewisps.bridgend.cymru) | Message us using the School Gateway app

Safeguarding and Child Protection information can be found here: <https://www.ajlprimary.co.uk/whos-who/safeguarding-and-child-protection>

## Upcoming Events

- **Wednesday 22<sup>nd</sup> October:** Flu Vaccines (R - Y6). More info to be sent out soon
- **Thursday 23<sup>rd</sup> October:** PTA Pumpkin Pop Parties - see poster below for more info
- **Friday 24<sup>th</sup> October:** INSET Day 2
- **Monday 27<sup>th</sup> - Friday 31<sup>st</sup> October:** Half Term
- **Thursday 6<sup>th</sup> November:** Mrs Bowen's class trip to St Fagans
- **Friday 7<sup>th</sup> November:** Coffi a Sqrws/Coffee and Chat, 2:30pm in the hall
- **Monday 10<sup>th</sup> November:** Applications for Reception September 2026 open
- **Wednesday 12<sup>th</sup> and Thursday 13<sup>th</sup> November** - Parent's Evenings
- **Friday 21<sup>st</sup> November:** Messy Church (Miss Conlon's class)
- **Friday 28<sup>th</sup> November:** Eucharist, 9:15am. All welcome

### Welsh Sentences of the Week

Please practice these at home with your child(ren):

- Wyt ti'n gwisgo...? Are you wearing...?
- Beth wyt ti'n wisgo? What are you wearing?
- Beth mae Sam yn wisgo? What is Sam wearing?



### Please Keep Us Updated!

Please ensure that your details are kept up to date with the school office. It is essential that we hold up to date address details, phone numbers and email addresses for all parents/carers and emergency contacts.

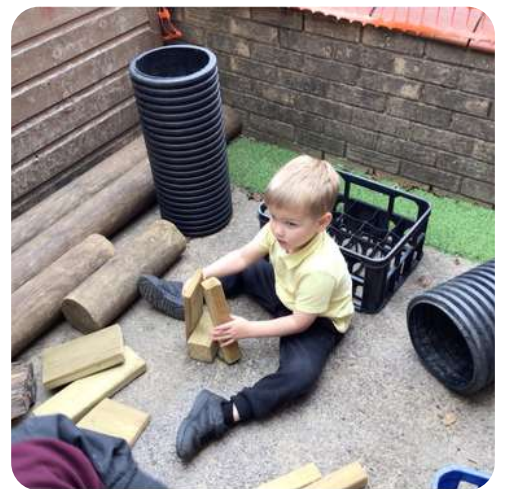
Any updates to personal information can be submitted on the Gateway app or by email to [admin@archdeaconjohnlewisps.bridgend.cymru](mailto:admin@archdeaconjohnlewisps.bridgend.cymru)



### Keep in Touch:

[www.ajlprimary.co.uk](http://www.ajlprimary.co.uk) | 01656 815520 | [admin@archdeaconjohnlewisps.bridgend.cymru](mailto:admin@archdeaconjohnlewisps.bridgend.cymru) | Message us using the School Gateway app

Safeguarding and Child Protection information can be found here: <https://www.ajlprimary.co.uk/whos-who/safeguarding-and-child-protection>





ARCHDEACON JOHN LEWIS PTA

# Pumpkin Pop Party

Thursday 23<sup>rd</sup> October

£1.50 per child

*(please purchase your ticket on the Gateway app)*

- Nursery to Year 1 - 5:15pm to 6:00pm  
*(parents please accompany your child)*
- Year 2 to Year 6 - 6:15pm to 7:15pm

Refreshments and light up wands available to buy on the night! *(cash only)*



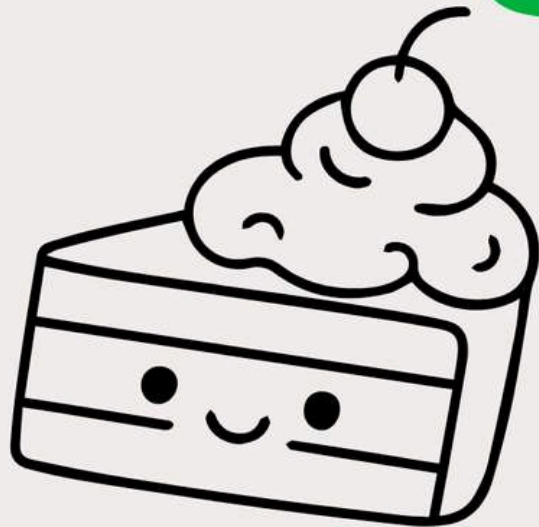


**Well done to our Netball stars! They played brilliantly and really enjoyed their day out at the inter-schools tournament.**

**Da iawn!**

# Coffi a Sqwrs Coffee and Chat

All money raised will go towards buying Welsh mascots for Criw Cymreig.

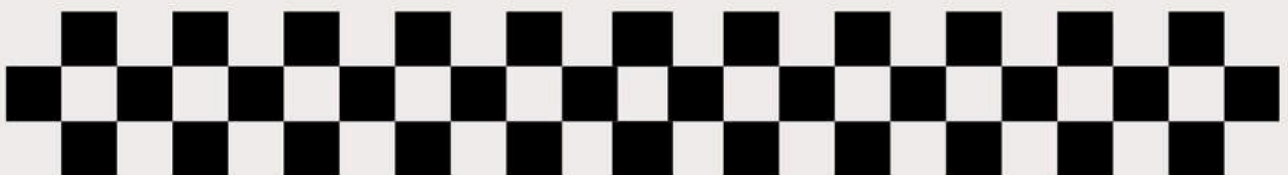


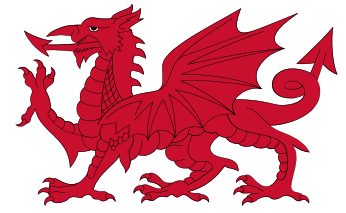
Dydd Gwener 7fed Tachwedd, 2:30pm, yn y neuadd

Friday 7<sup>th</sup> November, 2:30pm, in the hall

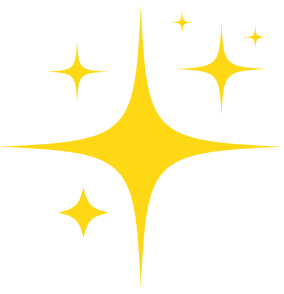


FAIRTRADE





**Criw Cymraeg award**



**Star of the Week**



**Value - Saying Sorry**

## Schools Family Advice project

Citizens Advice Bridgend provide free, confidential and impartial advice on a range of areas that affect families including; debt, benefits, housing, employment and family issues.

Advice tailored to your situation.

Fortnightly advice sessions at

**Porthcawl Comprehensive**  
**Pencoed Primary**  
**Cynffig Comprehensive**  
**Maesteg Comprehensive**  
**Brackla Primary**  
**ArchBishop McGrath**

Throughout term time.

To book an appointment call 01656 762800 and ask for a school appointment, or pop into your schools reception to ask for an appointment referral at one of the schools listed.

*A drop-in service will be delivered if appointment slots are available on the day - ask at school reception.*

## Citizens Advice helps people find a way forward.

We give free, confidential and independent advice to help people overcome their problems. We're a voice for people on the issues that matter to them.

We value diversity, champion equality, and challenge discrimination and harassment.

We're here for everyone.

01656 762800  
citizensadvice.org.uk



Citizens Advice is an operating name of The National Association of Citizens Advice Bureaux.  
Registered charity number 279057.

# Schools Family Advice South Wales



## Aim of the Project

We know how hard it can be living well in today's society - rising bills, reduced income and many other factors pose a challenge to families on a regular basis.

We want to take some of that worry away by providing income maximisation, welfare benefits, energy, housing, and debt support to parents of children living in Bridgend.

45% of children say they worry about having enough to eat. The Wellbeing of Wales national indicator report states that "children are consistently the age group most likely to be in relative income poverty."

We will work together to put an end to children and families being driven into poverty or worrying about paying bills or buying food.

## Is this service for you?

**YES -**

- If you have school aged children,
- If you worry about affording food, heating, rent / bills, uniforms, etc
- If you have debt
- If you are unsure where to turn for support

Any or all of the above can be explored in an advice session with us.

We can offer FREE advice and signposting to a range of support to help you and your family.

## How Citizens Advice can help

Our project will provide 1-2-1 advice sessions (of up to 1hr) for any parent / carer of a school age child within the school setting and provide practical support as well as signposting to other relevant agencies to make immediate and lasting improvements in their lives.

Each parent / carer will receive a full benefit check and income maximisation discussion based on their particular circumstances as well as access to emergency issue support such as food or fuel bank vouchers where applicable.

Individuals can also be referred into our specialist debt team at Citizens Advice if they require ongoing support for debt past the school-based session.



**Practising our essential PE skills!**





YOU'RE INVITED

# HARVEST FAYRE

SAT. 18 OCT.

FREE  
ENTRY

10AM - 4PM

- CRAFT STALLS
- HARVEST LUNCHES PORK PIE/ CHEESE
- CAKES AND SAVOURIES
- TEA AND REAL COFFEE
- CHUTNEYS AND JAMS
- CARDS
- TOMBOLA AND MANY OTHER STALLS
- CHILDREN'S ACTIVITIES



St Teilo's Church, Merthyr Mawr

In aid of our toilet project





In our drama lesson with the Archbishop teacher, we started with a few fun drama games to help us warm up and work together as a team.

Everyone enjoyed the energy and laughter as we moved around the space, using our bodies and voices in creative ways.

After the games, we worked on freeze frames to explore different scenes and emotions. The teacher guided us to think about the meaning behind each moment, helping us understand how still images can tell powerful stories.

It was a fun and thoughtful lesson that helped us grow in confidence and creativity





# AUTUMN HALF TERM CAMPS

## AMIGOS



**4-6  
YEAR OLDS**

£30 FOR 2 DAYS  
OR £17.50 PER DAY

## SKILLS



**6-11  
YEAR OLDS**

£100 FOR THE WEEK  
OR £22.50 PER DAY

## GOALKEEPER



**6-13  
YEAR OLDS**

£25 PER DAY

## MULTI SPORTS



**6-11  
YEAR OLDS**

£110 FOR THE WEEK  
OR £25 PER DAY



**Messy Church  
and a visit to the  
new skate park  
for Mrs Bowen's  
class this week!**



# FOOTBALL CAMPS

OCTOBER HALF TERM

# BRIDGEND



Sibling  
Discount  
Available

MONDAY - THURSDAY  
27<sup>TH</sup> - 30<sup>TH</sup> OF OCTOBER

8:30-4:30PM



Boys & Girls  
aged: 5-11years  
ALL ABILITIES WELCOME

EARLY BOOKING  
DISCOUNT  
£17.50 per day  
if booked before  
October 13th 2025  
£20 Per day if  
booked after  
13/10/25

ARCHDEACON  
JOHN LEWIS  
SCHOOL  
**BRACKLA**





Stage Right Productions

THE PANTOMIME ADVENTURES OF

# PETER PAN

28TH DEC 2025 - 3RD OF JAN 2026

MASONIC HALL, BRIDGEND

[Pantickets.com](https://www.pantickets.com)

Sponsored by...



RELAXED  
PERFORMANCE  
30.12 @2PM