

ARCHDEACON JOHN LEWIS NEWSLETTER

'Strength through knowledge and faith.'

Friday 28th November 2025

Attendance: 93%

Our school is busy preparing for Christmas, with plenty of exciting events taking place. Today we were delighted to host our joint PTA/Class Business Enterprise Christmas Fayre. We are also looking forward to our Foundation Learning Nativity performances, as well as the Christmas Church service led by children in Years 4, 5 and 6.

We are so grateful for your generous donations of sweets and cakes, and for supporting the children by purchasing their crafts. Your kindness and involvement help make this festive season truly special for our school community.

Thank you to our fantastic PTA for organising all the refreshments, helping to pack the sweets, and supporting the children with their crafts in class. Your efforts make such a positive difference.

A special thank you to Reverend Mark for leading Eucharist in school today on the theme of Advent. We are also grateful for the beautiful prayers written and read by the children in Mrs Hodges' class. The staff and Governors who attended the service all remarked on how wonderfully behaved all the children were throughout.

Have a lovely weekend,

Mrs L Forster

Acting Headteacher



Reminder:

Online ticket sales for Christmas Concerts will close on Wed 3rd Dec. Tickets will be sent home on Fri 5th Dec.

Keep in Touch:

www.ajlprimary.co.uk | 01656 815520 | admin@archdeaconjohnlewisps.bridgend.cymru | Message us using the School Gateway app

Safeguarding and Child Protection information can be found here: <https://www.ajlprimary.co.uk/whos-who/safeguarding-and-child-protection>

Upcoming Events

- **Monday 1st December:** Audio tests for Year 1 pupils with the School Nursing team
- **Monday 8th December:** Nativity Dress Rehearsal (N - Year 3)
- **Tuesday 9th December:** Nativity Play (N - Year 3) 9:30am
- **Wednesday 10th December:** Nativity Play (N - Year 3) 9:30am
- **Thursday 11th December:** Christmas Dinner Day and Christmas Jumper Day
- **Thursday 11th December:** 'The Roaming Gnome' Christmas show (kindly funded by the PTA)
- **Friday 12th December:** PTA Christmas Discos (see poster below - please purchase tickets on the gateway app by Weds 10th Dec)
- **Thursday 18th December:** Christmas Service in Coity Church (Year 1 - Year 6), 10:00am
- **Friday 19th December:** Last day of term
- **Monday 5th January:** INSET Day 3 of 6
- **Tuesday 6th January:** All pupils return to school

Please Keep Us Updated!

Please ensure that your details are kept up to date with the school office. It is essential that we hold up to date address details, phone numbers and email addresses for all parents/carers and emergency contacts.

Any updates to personal information can be submitted on the Gateway app or by email to admin@archdeaconjohnlewisps.bridgend.cymru



Keep in Touch:

www.ajlprimary.co.uk | 01656 815520 | admin@archdeaconjohnlewisps.bridgend.cymru | Message us using the School Gateway app

Safeguarding and Child Protection information can be found here: <https://www.ajlprimary.co.uk/whos-who/safeguarding-and-child-protection>

We are very proud to say we are now a Platinum Eco School!



Congratulations to all the children and staff who have worked so hard to make this happen!



We have consistently worked hard on lots of initiatives and the ten topics of Eco Schools!

We are very proud of the plaque presented to us at the Youth Cop today in Cardiff, Temple of Peace!



We all can make a difference!

Criteria for a Platinum School

A Platinum Eco School is a school that has been consistently awarded in the programme for three years, or that has a five-year record in the Green Flag. By this point, the Eco Schools programme should be well established in the life of the school and the Green Flag process well understood by all staff and pupils. During this process the school will be awarded the Platinum Award for all year achievements and the Green Flag award for the school's overall performance.

The following table provides a checklist of the criteria for a Platinum Eco School.

| Criteria | Yes | No |
|---|-----|----|
| 1. The school has a Green Flag award for three consecutive years. | | |
| 2. The school has a Green Flag award for five consecutive years. | | |
| 3. The school has a Green Flag award for five consecutive years. | | |
| 4. The school has a Green Flag award for five consecutive years. | | |
| 5. The school has a Green Flag award for five consecutive years. | | |
| 6. The school has a Green Flag award for five consecutive years. | | |
| 7. The school has a Green Flag award for five consecutive years. | | |
| 8. The school has a Green Flag award for five consecutive years. | | |
| 9. The school has a Green Flag award for five consecutive years. | | |
| 10. The school has a Green Flag award for five consecutive years. | | |
| 11. The school has a Green Flag award for five consecutive years. | | |
| 12. The school has a Green Flag award for five consecutive years. | | |
| 13. The school has a Green Flag award for five consecutive years. | | |
| 14. The school has a Green Flag award for five consecutive years. | | |
| 15. The school has a Green Flag award for five consecutive years. | | |
| 16. The school has a Green Flag award for five consecutive years. | | |
| 17. The school has a Green Flag award for five consecutive years. | | |
| 18. The school has a Green Flag award for five consecutive years. | | |
| 19. The school has a Green Flag award for five consecutive years. | | |
| 20. The school has a Green Flag award for five consecutive years. | | |



Take part in a new study about child development in Wales

Who can take part?

Parents and carers of children aged 9-11 years (Years 5 & 6) in a primary school in Wales.

Why take part?

- This research study is about children's abilities to regulate their attention, behaviours and emotions.
- Taking part will help us to better understand children's challenges related to ADHD.
- This will help children with ADHD (particularly girls, who are often missed) get timely support.

What taking part involves?

- Complete an assessment pack that includes questions about your child's development
- Enter a prize draw for a gift voucher.
- To find out more about what taking part involves, please visit our website.

How to take part



To take part: scan this QR code or visit bit.ly/ADHDbears

For more information, please contact
Dr Joanna Martin:
martinjm1@cardiff.ac.uk

Wolfson Centre
for Young People's Mental Health
Canolfan Wolfson
ar gyfer iechyd Meddal Ffurf Fawr

NCMH
National Centre for Mental Health
Canolfan Iechyd Meddal Genedlaethol

Ysychell Iechyd a Gofal Cymro
Health and Care Research Wales



Thursday 11th December

Christmas Lunch 2025

CATERING SERVICES



Roast Turkey
with Sage & Onion Stuffing
Mini Sausage
Creamed & Crispy Baked Potatoes
Baton Carrots, Brussels Sprouts & Garden Peas
Accompanied by Traditional Gravy

Christmas Pudding with Winter Warmer Sauce
or a Selection of Festive Desserts

Served with Milk or Water



**Merry Christmas
from your kitchen team**

Whole school show, kindly
funded by the PTA.

Teepee Theatre



Educational Theatre at its Peak

**The Roaming
Gnome**





ARCHDEACON JOHN LEWIS PRIMARY SCHOOL

PTA CHRISTMAS DISCO

FRIDAY 12TH DECEMBER

N - Y1: 4:45PM-5:30PM
(PARENTS TO STAY)

Y2 - Y6: 5:45PM-6:45PM

BOOK ON THE APP!
REFRESHMENTS SOLD
ON THE NIGHT

£1.50

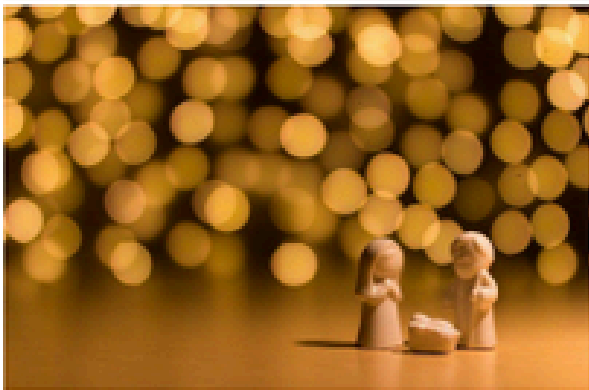


Knock Knock Nativity

Come to the Knock Knock Nativity.

Times: Tuesday 9th and Wednesday 10th December
(both at 9:30 am).

Classes: Nursery up to Year 3



Time for a knock knock joke.....

Knock knock...

Who's there?

Yah!

Yah who?

Wow, you're really excited about Christmas!

Share it with a friend if you want.



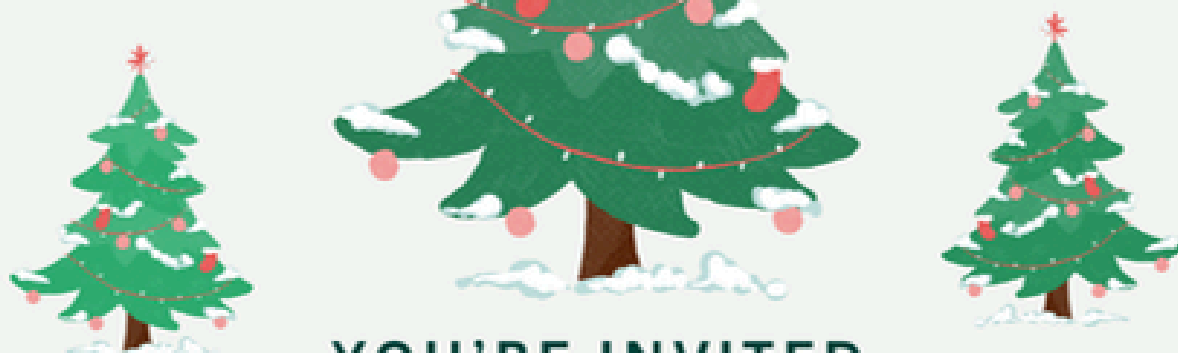
It will be the best nativity play in AJL yet!!!

**JOIN OUR SCHOOLS
NATIVITY PLAY!
KNOCK KNOCK NATIVITY
• TUESDAY 9th &
WEDNESDAY 10th
9:30 AM DECEMBER!**





PENYBONT
— CHURCHES

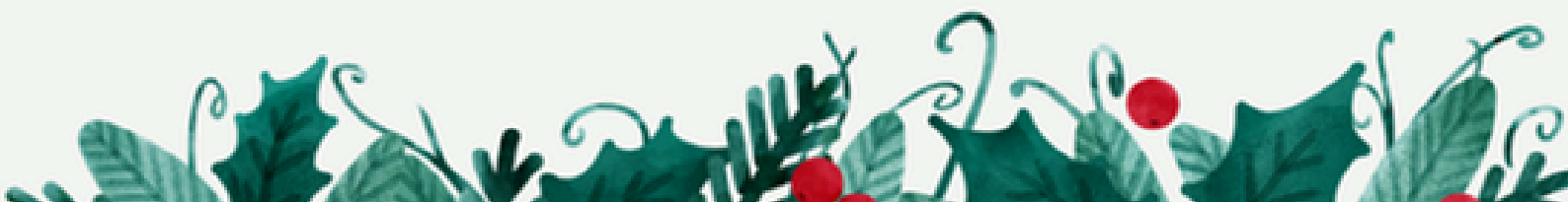


YOU'RE INVITED
TO OUR MINISTRY AREA

CHRISTMAS TREE FESTIVAL

St Mary's Church , Nolton
10th - 14th December

see seperate programme of events - updates on website





The Ministry Area of Pen-y-bont ar Ogwr

CHRISTMAS TREE FESTIVAL EVENTS:

Wed. 10th: 1:00pm Festival Opens

2:30pm Maes Yr Haul School

4:30pm Brynteg School

Thurs. 11th: 11:00am Morning Prayer

2:00pm Ysgol Gymraeg Bro Ogwr

4:30pm St Brides School

5:30pm Archdeacon John Lewis School

Fri. 12th: 11:00am Morning Prayer

2:00pm Organ Recital

4:00pm Llangewydd Junior School

5:00pm Penyfai School

6:00pm Ministry Area Choir

Sat. 13th: 9:30am Morning Prayer

10:00am Busker Organs Wales

11:00am Trelales School

12:00pm Ministry Area Choir

1:00pm 'A Christmas Three' - Colin, Jo + Richard

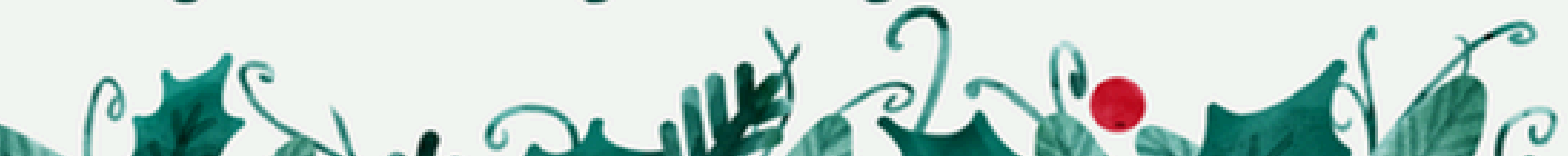
2:00pm Carers Choir

3:30pm Festive Ensemble

4:30pm: Festive Favourites - Beth + Dan

Sun. 14th: 2:00pm Carol Singing with the band + raffle draw.

Raising funds for Bridgend Young Carers and our Churches



The background image shows the interior of a church. People are seated in wooden pews, facing the altar. The church has high ceilings, arched windows with stained glass, and a large altar with a golden tabernacle. The lighting is warm and focused on the altar area.

You're Invited!

Join us for Confirmation Sunday

30th November, 10am
St Mary's, Nolton
Kids activities, music,
and more.

www.penybont-churches.org.uk